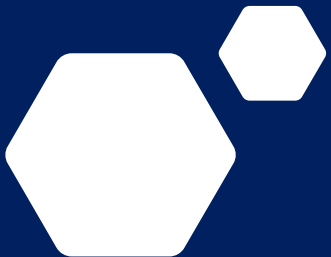




# Welcome to Marquez Industries

## Design and 3D Imaging



# 3D SCAN TECHNOLOGIES

INCREASING PRODUCTION AND DESIGN  
THROUGH 3D IMAGING





# FOCUS S70

DECREASING THE TIME OF 3D  
MODELING THROUGH THE  
RESOURCES OF FARO TECHNOLOGIES

An aerial photograph of a construction site, possibly a quarry or industrial area, with a grid overlay and several orange markers. The scene is viewed from a high angle, showing a large cylindrical structure and various pieces of equipment. The background is a dark blue gradient with a pattern of white hexagons.

# POINT, CLICK, SCAN

THE SETUP AND PROCESSING OF  
1,000,000 POINTS PER SCAN ALLOWS  
FOR OPTIMAL ACCURACY AND THE  
CAPABILITY TO NAIL THE SWEET SPOT,  
EVERYTIME.

# About Us

Our Team has many years of combined experience in the Oil and Gas Industry. We have seen just about everything there is to see and have worked in many ways to resolve issues for many of our clients with our design team, fab shop and field supervisors.

“No job is too small,” remains our slogan

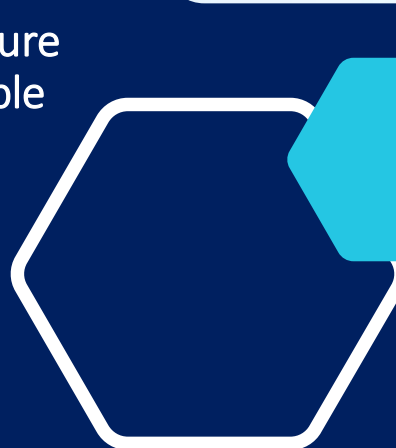


# Our Promise

To provide the most accurate measurements and design model for our customers. To provide quality assurance per project.

## Our Practice

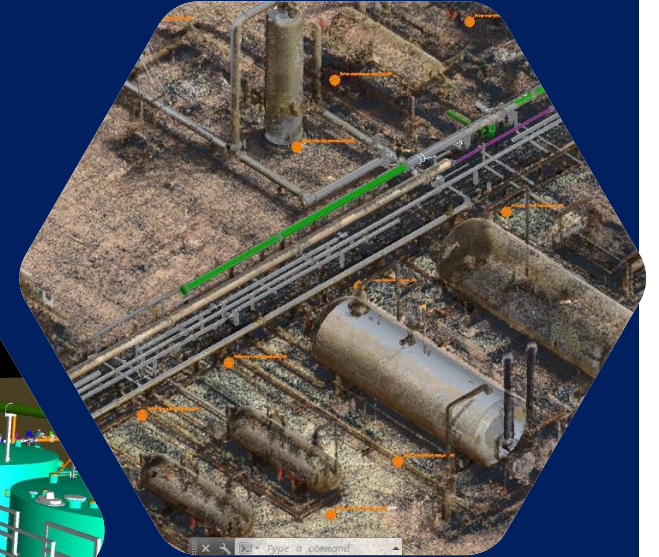
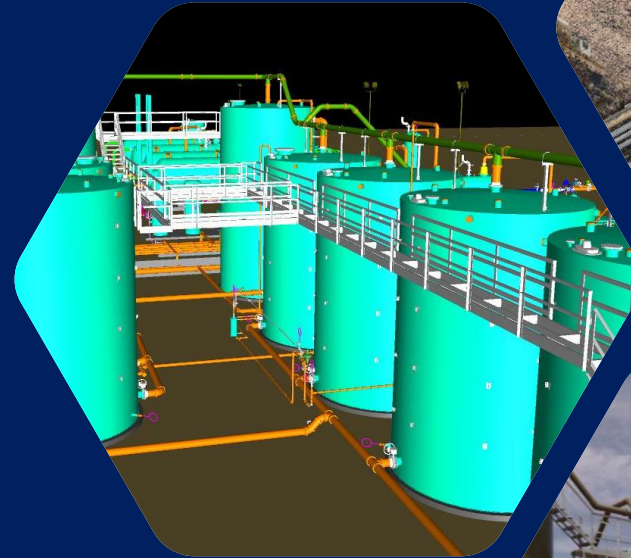
- We perform all our scans with the best equipment on the market.
- We have 5 different Senior Designers who all put their eyes on each project and offer their expertise in the field of design.
- We perform safe practices out in the field making sure that each project runs as smooth and safe as possible



# Our Product

FARO S70 SCANNER, AS-BUILT AND VIRTUSERV PROGRAMS  
PROCESSING THROUGH AUTOCAD P3D DESIGN SOFTWARE

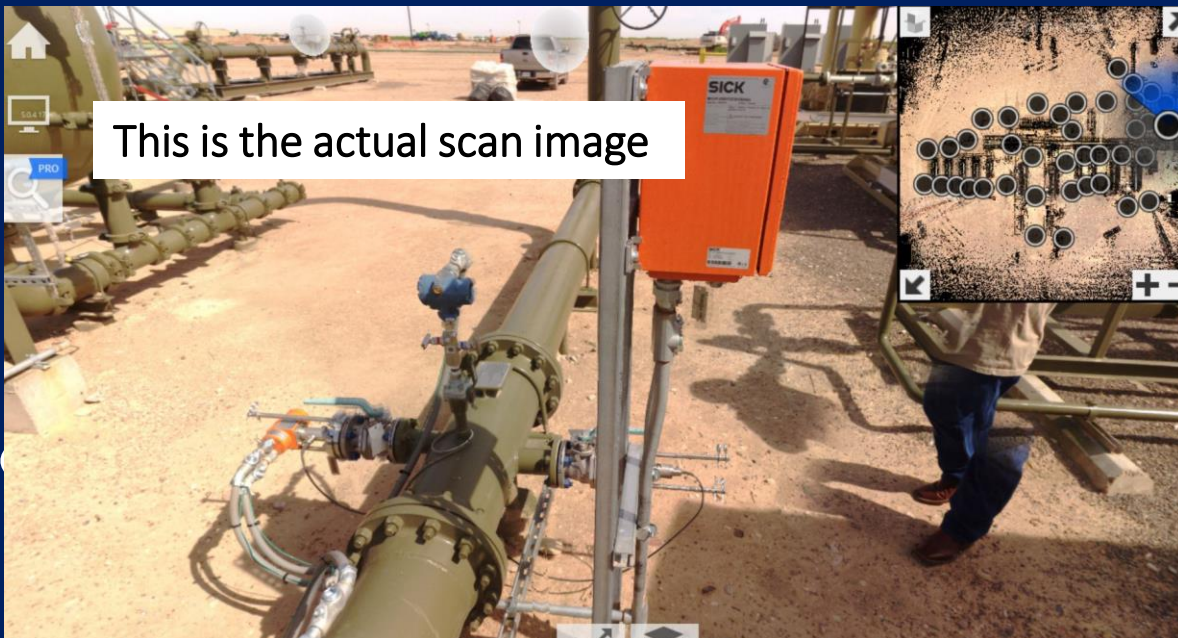
- WE CREATE UNIQUE VALUE AND SUPPORT OPERATIONAL EXCELLENCE FOR OUR CUSTOMERS BY:
- Enabling faster, more accurate, compelling and useable 3D documentation
- Accelerating execution timelines
- Minimizing in field 3D documentation and measurement times
- Shrinking margin impacting scrap and rework costs
- Reducing development risk



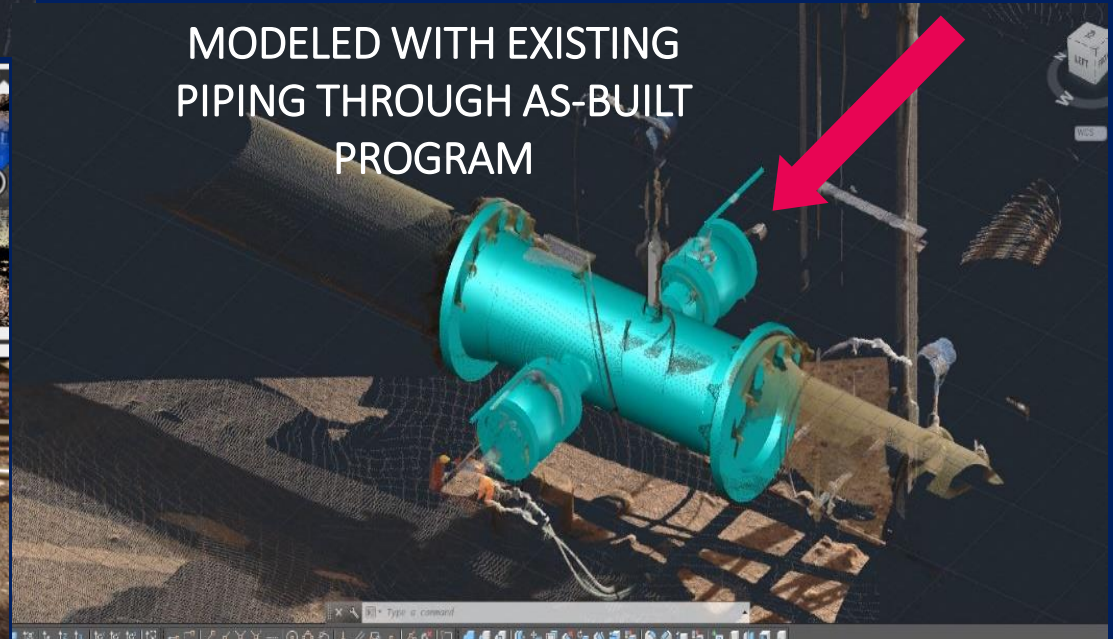


SCANNED SICK METER  
SPOOL PIECE AND  
MODELED WITH EXISTING  
PIPING

EVERY 3D SCAN PROJECT WE  
SHOOT, GIVES US PLENTY OF  
DETAIL TO MODEL FROM  
WHILE IN THE OFFICE,  
SAVING TIME AND MONEY

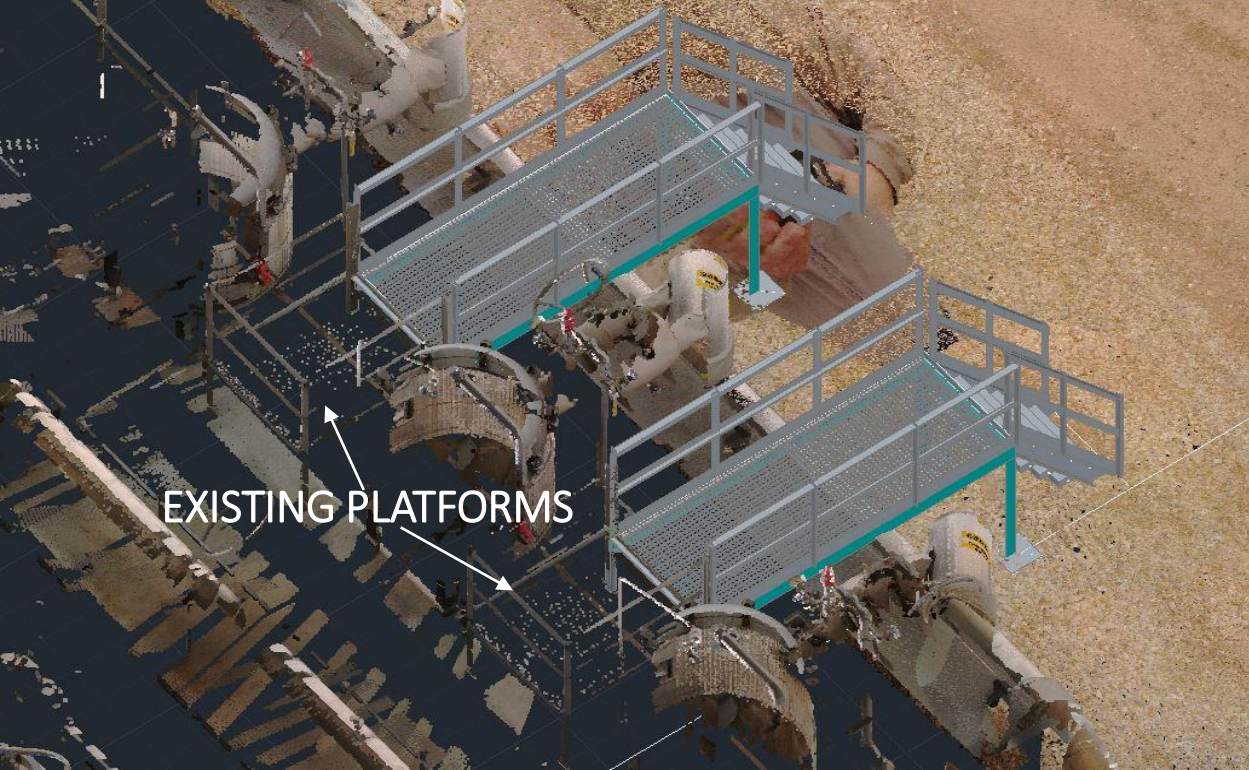


This is the actual scan image

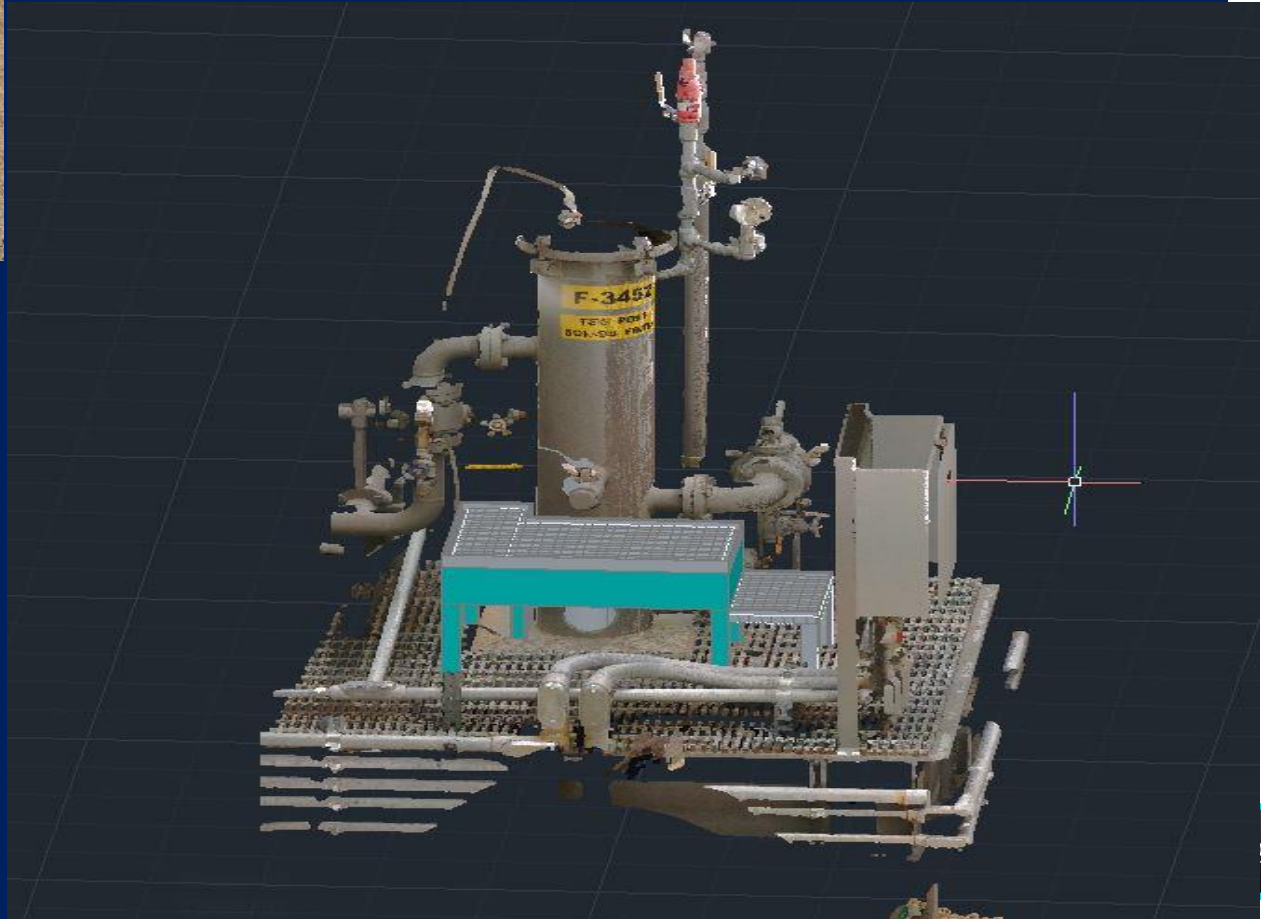


MODELED WITH EXISTING  
PIPING THROUGH AS-BUILT  
PROGRAM





USING 3D SCANNING  
ALLOWS FOR ACCURATE FIT  
UP OF PLATFORM  
STRUCTURES AND  
EQUIPMENT



**Marquez Industry Design Services**, utilizes the latest 3D Laser Scanning technology and software to gather the best results available today. We employ the use of FARO Laser Scanners equipped with the 3DR Site Scan survey program for detailed measurements of any given site or piece of equipment. This is the most effective solution for measuring and locating the most challenging as-built conditions in any environment with real life accuracy.



**The 3D Scanner data output is a 3D Point Cloud, a surface geometry map which can be inserted into any CAD program. This allows our engineers/drafters to draw true to life models that match any unique facility layout.**



## FOCUS 70

The ultra-portable Focus 70 enables fast, straightforward and ultra-high accurate measurements of objects and buildings. It records architectural façades, complex structures, production and supply facilities, accident sites, and large-volume components delivering realistic and true-to-detail scan results with a range of 70m per scan.

- Distance accuracy up to  $\pm 1\text{mm}$
- Range from 0.6m up to 70m
- IP Class 54
- On-Site Compensation
- On-Site Registration (with FARO SCENE)
- Rescanning of distant targets in higher resolution
- Digital hashing function
- Retake Photo Option
- Accessory Bay
- HD photo overlay up to 165 megapixel color





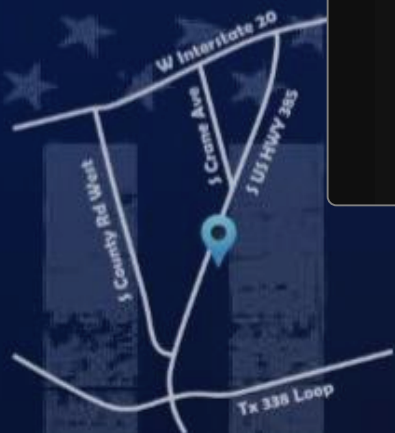
# Marquez

## CONSTRUCTION




& Maintenance

### SERVICES

- Roustabout Crews
- Construction Crews
- Torque Crews
- Concrete/Grout
- Electrical
- Fabrication
- Hot Shot
- Dirt Work
- Fencing
- Hydro Testing
- Crane & Rigging
- Backhoe Services
- Code / Non-Code Vessels & Repairs
- Painting/Coating (mobile units for any location)
- Insulation & Scaffolding



# Thank You

-  Angel Marquez
-  432-631-4822
-  [angel@marquezc.com](mailto:angel@marquezc.com)

### Services

- Code Vessel Fabrication
- Vessel Repair
- Custom Fabrication
- Sandblasting and Painting
- Electrical and Instrumentation
- Non-Code Vessel Fabrication
- Skid Packages
- Structural Fabrication
- Internal and External Coating



2751 S US. Hwy 385 | Odessa, Texas 79766 | 432.631.4822