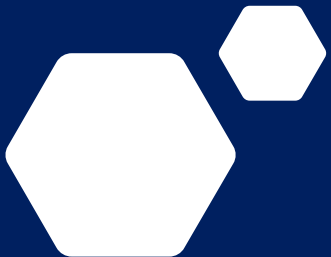




Welcome to Marquez Industries Design and 3D Imaging



3D SCAN TECHNOLOGIES

INCREASING PRODUCTION AND
DESIGN THROUGH 3D IMAGING





FOCUS S 70

DECREASING THE TIME OF 3D
MODELING THROUGH THE
RESOURCES OF FARO
TECHNOLOGIES

An aerial photograph of an industrial facility, possibly a refinery or chemical plant, with a dense point cloud overlay. The point cloud is rendered in various colors (orange, green, purple) to highlight different parts of the structure. A semi-transparent dark grey box with a white hexagonal cutout is positioned on the left side of the image. At the bottom center, a portion of a CAD software interface is visible, showing a command line with the text "Type a command" and some icons.

POINT, CLICK, SCAN

THE SETUP AND PROCESSING OF
1,000,000 POINTS PER SECOND
ALLOWS FOR OPTIMAL ACCURACY
AND THE CAPABILITY TO NAIL THE
SWEET SPOT, EVERYTIME.

About Us

Our Team has many years of combined experience in the Oil and Gas Industry. We have seen just about everything there is to see and have worked in many ways to resolve issues for many of our clients with our design team, fab shop and field supervisors.

“No job is too small,” remains our slogan



Our Promise

To provide the most accurate measurements and design model for our customers. To provide quality assurance per project.

Our Practice

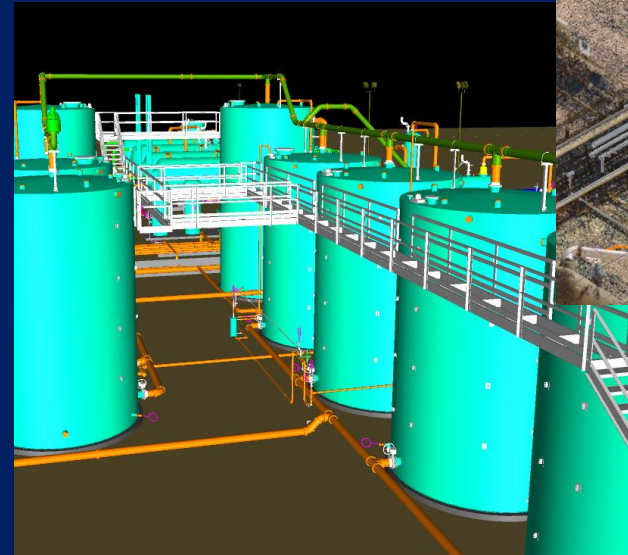
- We perform all our scans with the best equipment on the market.
- We have 5 different Senior Designers who all put their eyes on each project and offer their expertise in the field of design.
- We perform safe practices out in the field making sure that each project runs as smooth and safe as possible



Our Product

FARO S70 SCANNER, AS-BUILT AND VIRTUSERV PROGRAMS PROCESSING THROUGH AUTOCAD P3D DESIGN SOFTWARE

- WE CREATE UNIQUE VALUE AND SUPPORT OPERATIONAL EXCELLENCE FOR OUR CUSTOMERS BY:
- Enabling faster, more accurate, compelling and useable 3D documentation
- Accelerating execution timelines
- Minimizing in field 3D documentation and measurement times
- Shrinking margin impacting scrap and rework costs
- Reducing development risk



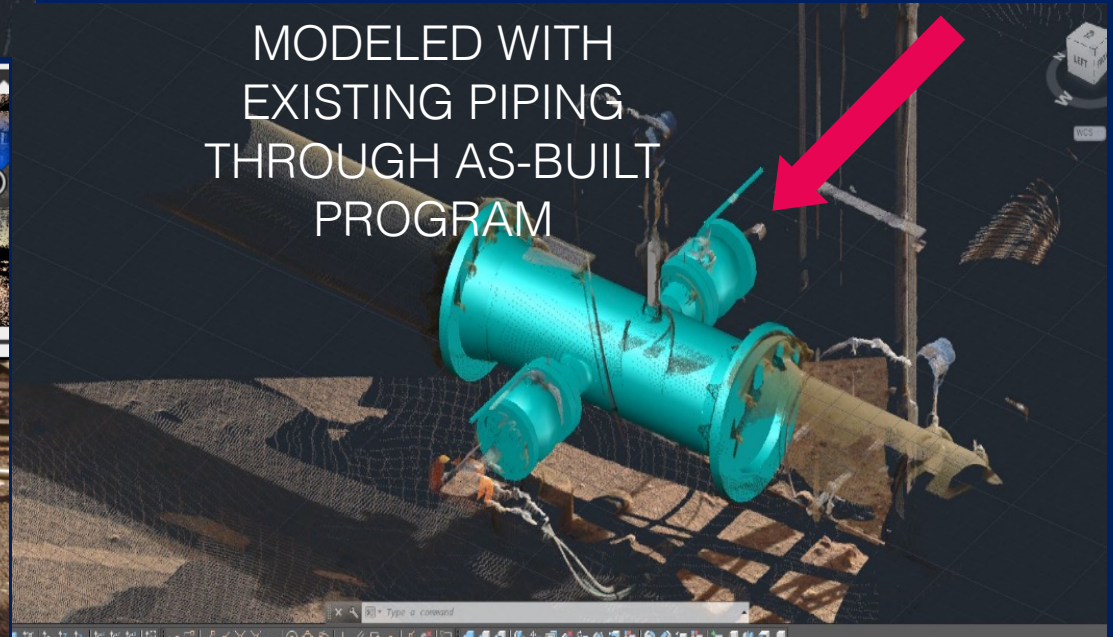


SCANNED SICK METER
SPOOL PIECE AND
MODELED WITH
EXISTING PIPING

EVERY 3D SCAN
PROJECT WE SHOOT,
GIVES US PLENTY OF
DETAIL TO MODEL FROM
WHILE IN THE OFFICE,
SAVING TIME AND
MONEY



This is the actual scan image



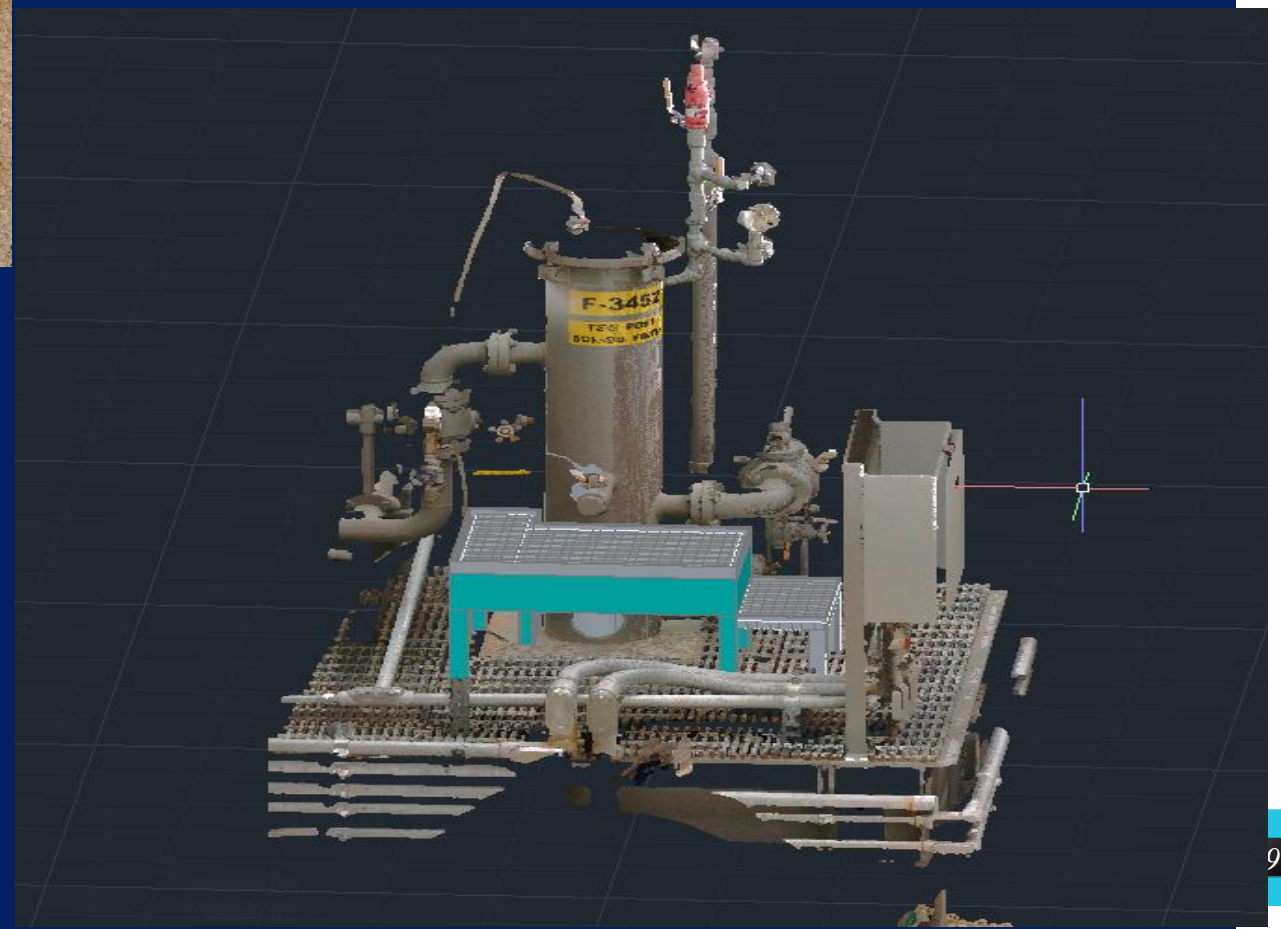
MODELED WITH
EXISTING PIPING
THROUGH AS-BUILT
PROGRAM



USING 3D SCANNING
ALLOWS FOR ACCURATE
FIT UP OF PLATFORM
STRUCTURES AND
EQUIPMENT



The actual scan
for modeling
platform



Marquez Industry Design Services, utilizes the latest 3D Laser Scanning technology and software to gather the best results available today.

Focus^S 70, perfectly suitable for short-range measurements up to 70m. With their sealed design, all S Laser Scanner models are certified via the industry standard Ingress Protection (IP) Rating, and classified in Class 54 for environmental protection. Each device is built to safeguard against intrusions such as dirt, dust, fog and rain as well as other outdoor elements which typically occur in challenging scanning conditions. An extended temperature range allows scanning in extreme environments, like deserts.



The 3D Scanner data output is a 3D Point Cloud, a surface geometry map which can be inserted into any CAD program. This allows our engineers/drafters to draw true to life models that match any unique facility layout.



FOCUS^s 70

The ultra-portable Focus^s 70 enables fast, straightforward and ultra-high accurate measurements of objects and buildings. It records architectural façades, complex structures, production and supply facilities, accident sites, and large-volume components delivering realistic and true-to-detail scan results with a range of 70m per scan.

- Distance accuracy up to $\pm 1\text{mm}$
- Range from 0.6m up to 70m
- IP Class 54
- On-Site Compensation
- On-Site Registration (with FARO SCENE)
- Rescanning of distant targets in higher resolution
- Digital hashing function
- Retake Photo Option
- Accessory Bay
- HD photo overlay up to 165 megapixel color





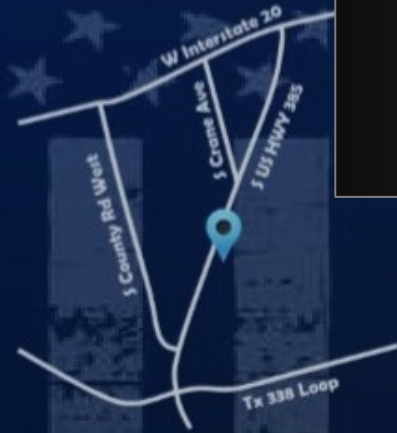
Marquez

CONSTRUCTION & Maintenance



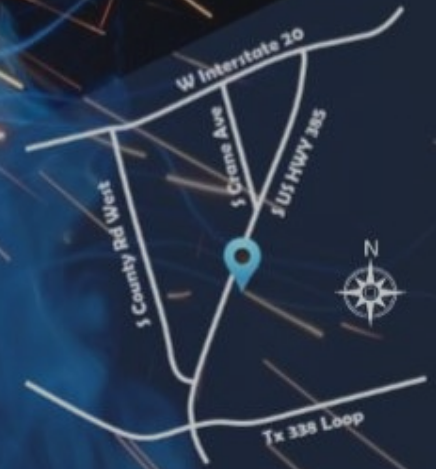
SERVICES

- Roustabout Crews
- Construction Crews
- Torque Crews
- Concrete/Grout
- Electrical
- Fabrication
- Hot Shot
- Dirt Work
- Fencing
- Hydro Testing
- Crane & Rigging
- Backhoe Services
- Code / Non-Code Vessels & Repairs
- Painting/Coating (mobile units for any location)
- Insulation & Scaffolding



Thank You

- Angel Marquez
- 432-631-4822
- angel@marquezc.com



Services

- Code Vessel Fabrication
- Vessel Repair
- Custom Fabrication
- Sandblasting and Painting
- Electrical and Instrumentation
- Non-Code Vessel Fabrication
- Skid Packages
- Structural Fabrication
- Internal and External Coating



2751 S US. Hwy 385 | Odessa, Texas 79766 | 432.631.4822

